

Bass

Eternal Blaze

Mahou Shoujo Lyrical Nanoha A's

♩ = 103

♩ = 156

Composed by Noriyasu Agematsu

Arranged by Jim Tian



p.

11



mf.

15



f.

20



26



32



mp.

37



43



50



V.S.

jimmytian629@hotmail.com

Last update: June 10, 2008

56

56

62

The musical score for Example 62 is written on a single staff with a bass clef. The key signature has one sharp (F#). The melody begins with a quarter rest, followed by a quarter note G2 (one ledger line below the staff). This is followed by a series of eighth notes: A1 (two ledger lines below), B1 (three ledger lines below), C2 (three ledger lines below), D2 (three ledger lines below), E2 (three ledger lines below), F2 (three ledger lines below), G2 (one ledger line below), A2 (one ledger line below), B2 (below the staff), and C3 (below the staff). These notes are grouped by a slur. The melody then continues with a half note D3 (below the staff), a half note E3 (below the staff), a half note F3 (below the staff), a half note G3 (below the staff), a half note A3 (below the staff), a half note B3 (below the staff), a half note C4 (below the staff), a half note D4 (below the staff), a half note E4 (below the staff), a half note F4 (below the staff), a half note G4 (below the staff), a half note A4 (below the staff), a half note B4 (below the staff), a half note C5 (below the staff), a half note D5 (below the staff), a half note E5 (below the staff), a half note F5 (below the staff), a half note G5 (below the staff), a half note A5 (below the staff), a half note B5 (below the staff), and a half note C6 (below the staff). The score ends with a double bar line.

70

mp.

77

77

[illegible]

88

Example 10-10

93

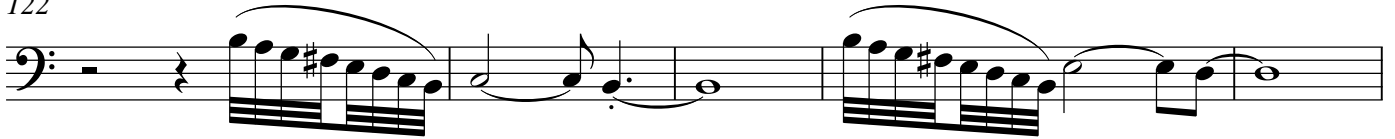
93

[illegible][illegible]

112

5

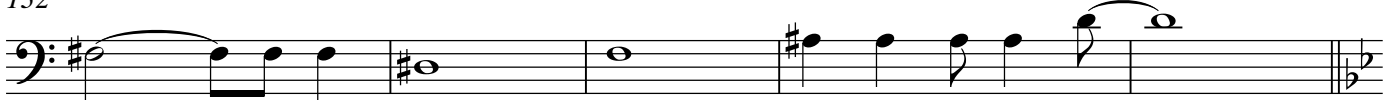
122



127



132



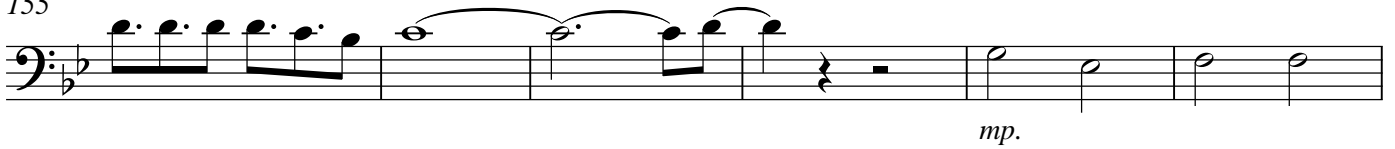
137



149



155



161



167



173



179



183



187

